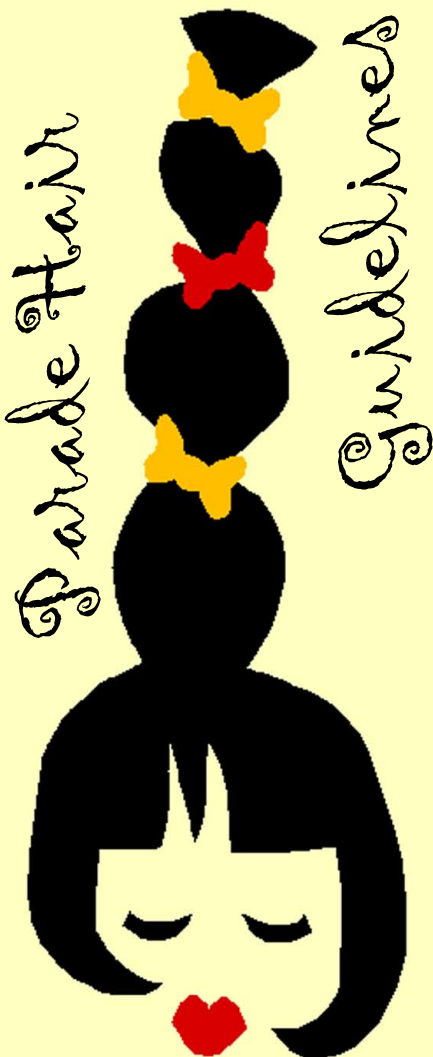
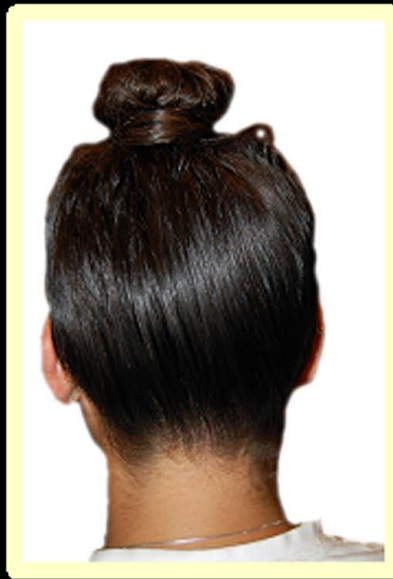


Redwood Marching Band



LONG HAIR should be up in a bun — The bun should sit directly on top of the head. It has to be secure but can be messy at the top. Make sure that there are no fly-aways in the back (close to neck) or around the ears. Fly-aways along the forehead or bangs do not matter as long as they can be tucked under the hat, and out of sight.

SHORT HAIR must end above the collar at the back of the neck and trimmed around the ear otherwise hair needs to be gelled back in a ponytail and tucked under the hat.

